

## USER GUIDE DATALOGGER SETUP :

### EUROSONIC 2000 HH SETUP



1) Choose item to log on : MENU M50

ENT

M50  
Logger Options  
OFF



M50  
Logger Options  
OFF  
=> ON



Items Selections  
1.Date and Time  
OFF  
=> ON

ENT

Items Selections  
2.System Statue  
OFF  
=> ON



Items Selections  
4.Flow Rate  
OFF  
=> ON

2) Setup the Start , interval and stop time for logging on MENU M51

M51  
Start 16:10:00  
Intervl 00:00:30  
Go On 17:30:00



START TIME >  
TIME ON M60

M60  
Date 05-02-26  
Time 15:59:11

3) MENU M52 SELECT "TO BUFFER"

M52  
Data Direction  
=> To Buffer  
2. Buffer=>RS232

ENT

4) When finished logging , connect to PC with an RS232 cable (RS232/USB adapter)

ON M62 SETUP : 9600 8N1

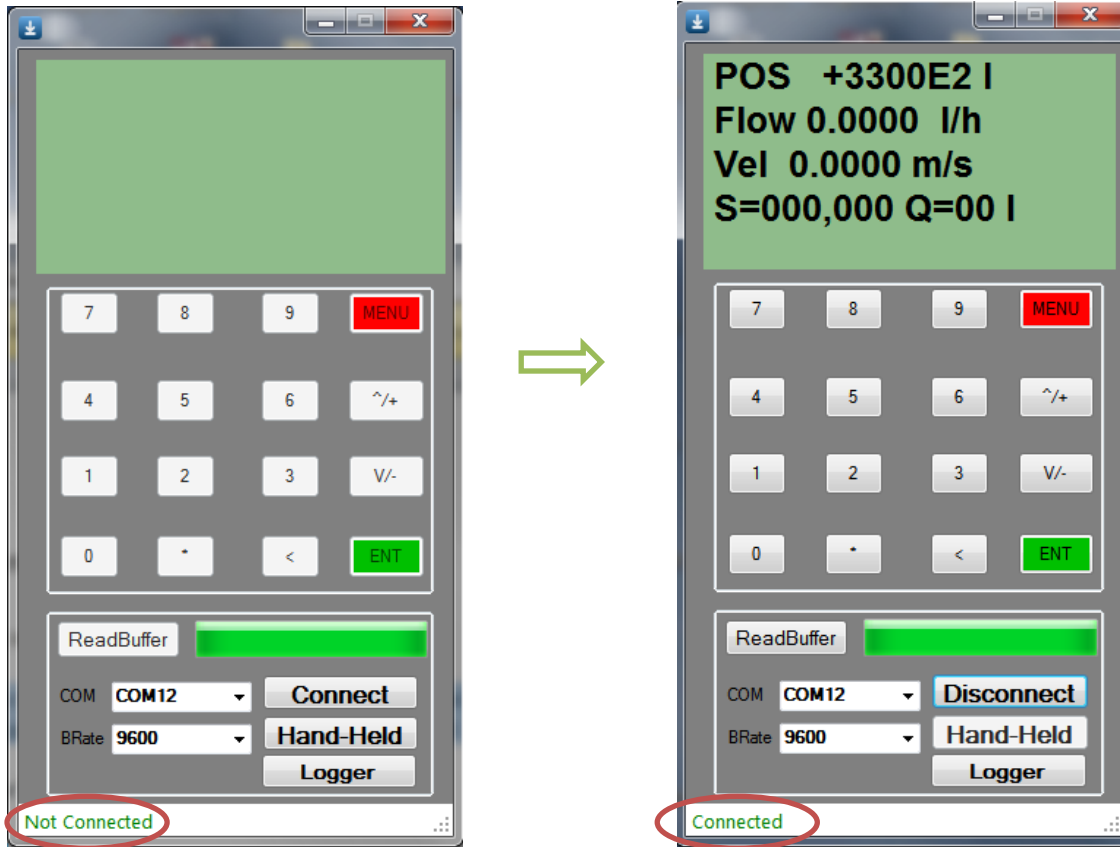
M62  
RS-232C Setup  
Baudrate:=9600  
Parity: None

M62  
RS-232C Setup  
=>Parity: None  
Parity: Odd

ENT



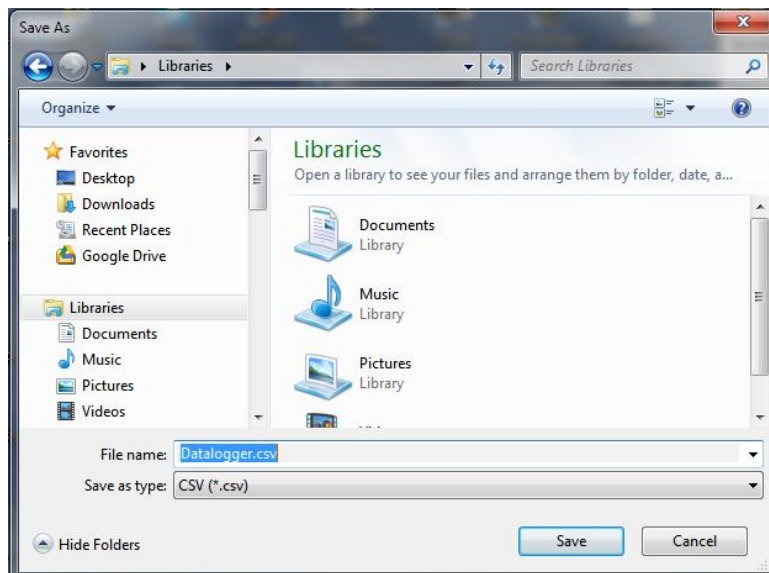
5) Run Eurosonic.exe  select the right Com and Baud rate and press Connect



6) To download the buffer to PC press ReadBuffer .

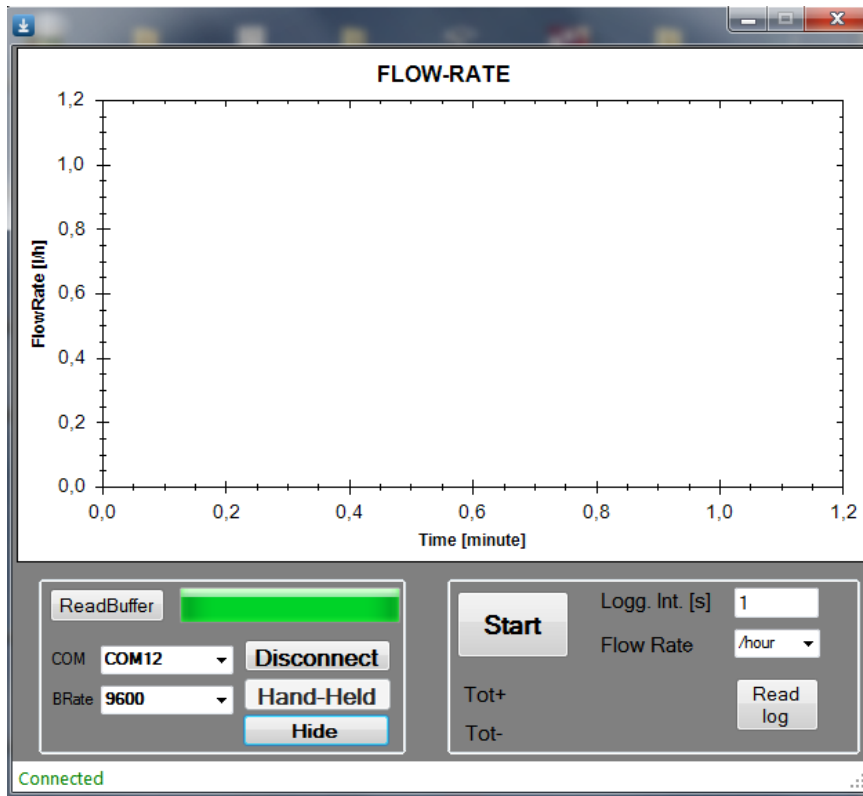


Choose where to save the log file

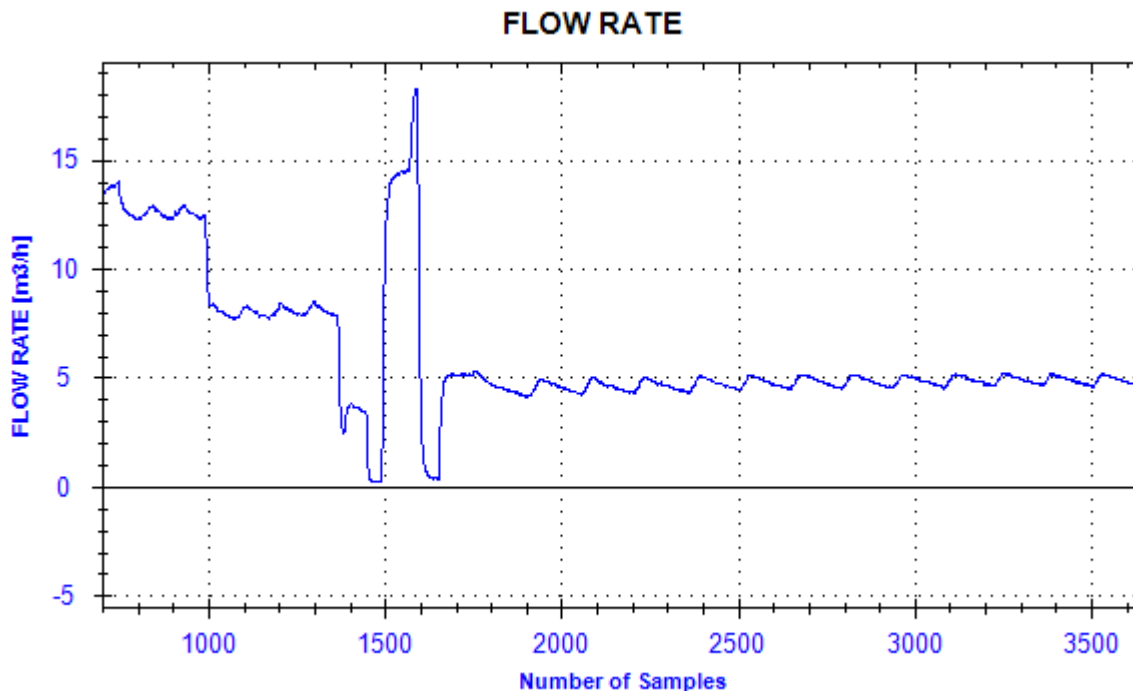


Using the PC as data logger.

- 1) Press **Logger** button.
- 2) Select log Interval "Logg.Int [s]" and unit /sec, /min, /hour, /day
- 3) Press **Start** to start the logging
- 4) On the **Save As** dialog window, choose where to save the log file .



To read a log file press **Read log** , on Open dialog window select the file to read.



## EUROSONIC 2000 WM SETUP (PC logger)

- 1) MENU M62 SERIAL PORT SET UP: 9600 8N1



**RS-485/RS-232 Setup  
9600, None, 8, 1**



- 2) SELECT COMMUNICATION PROTOCOL MENU M63



**Select Comm Protocol  
MODBUS ASCII+TDS7**

- 3) MENU M52 SEND LOG DATA TO INTERNAL SERIAL BUS



**Send Log-Data to [52  
0. Internal SerBus**

- 4) Connect to PC and run Eurosonic.exe , select WallMount.

